



AFRICAN CENTRE OF METEOROLOGICAL APPLICATIONS FOR DEVELOPMENT

## WEATHER WATCH & PREDICTION DEPARTMENT



### SOUTHERN AFRICA WEATHER BULLETIN

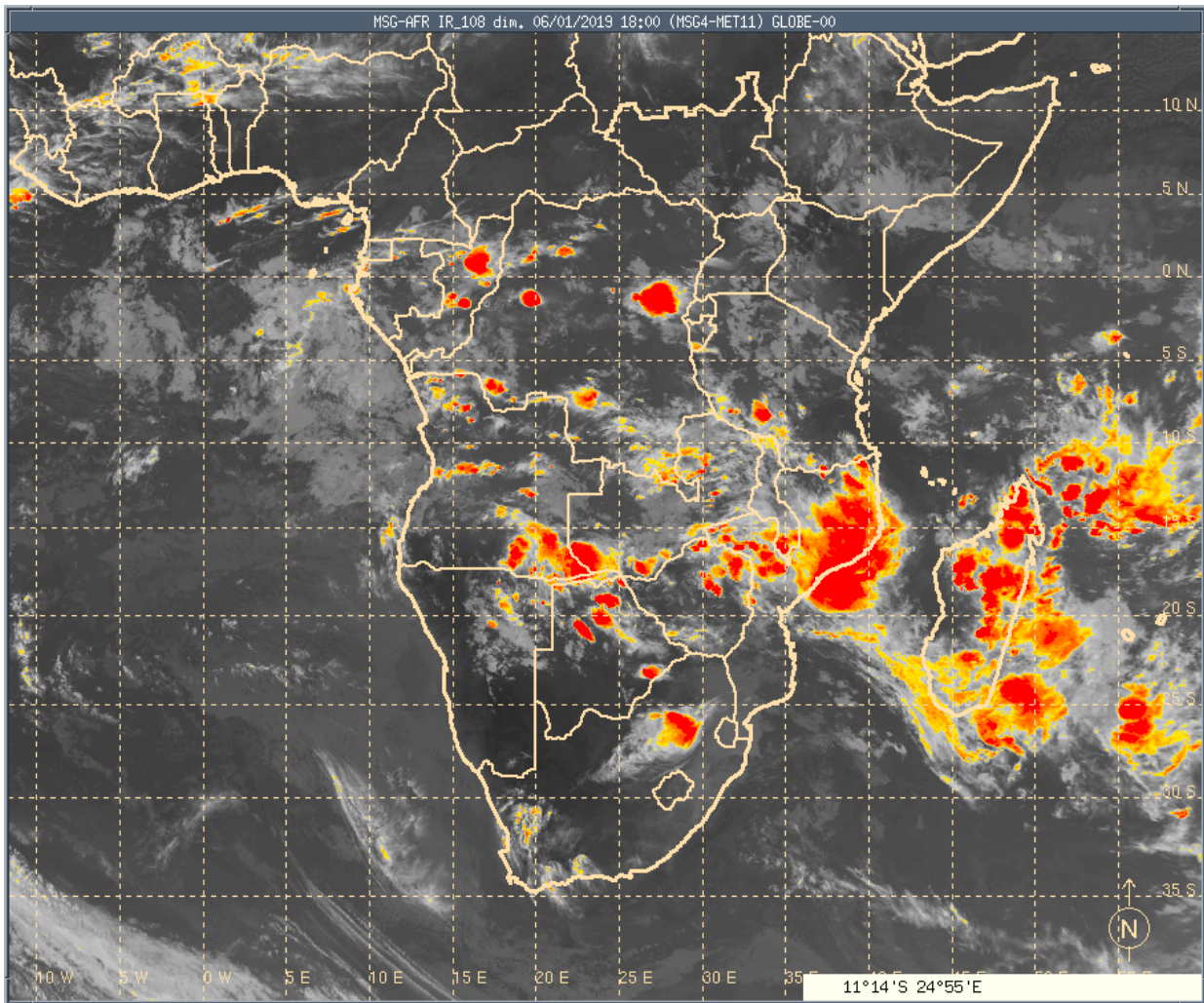
PSN.06 – 228

January 7<sup>th</sup>, 2019

email: [previ@acmad.org](mailto:previ@acmad.org)

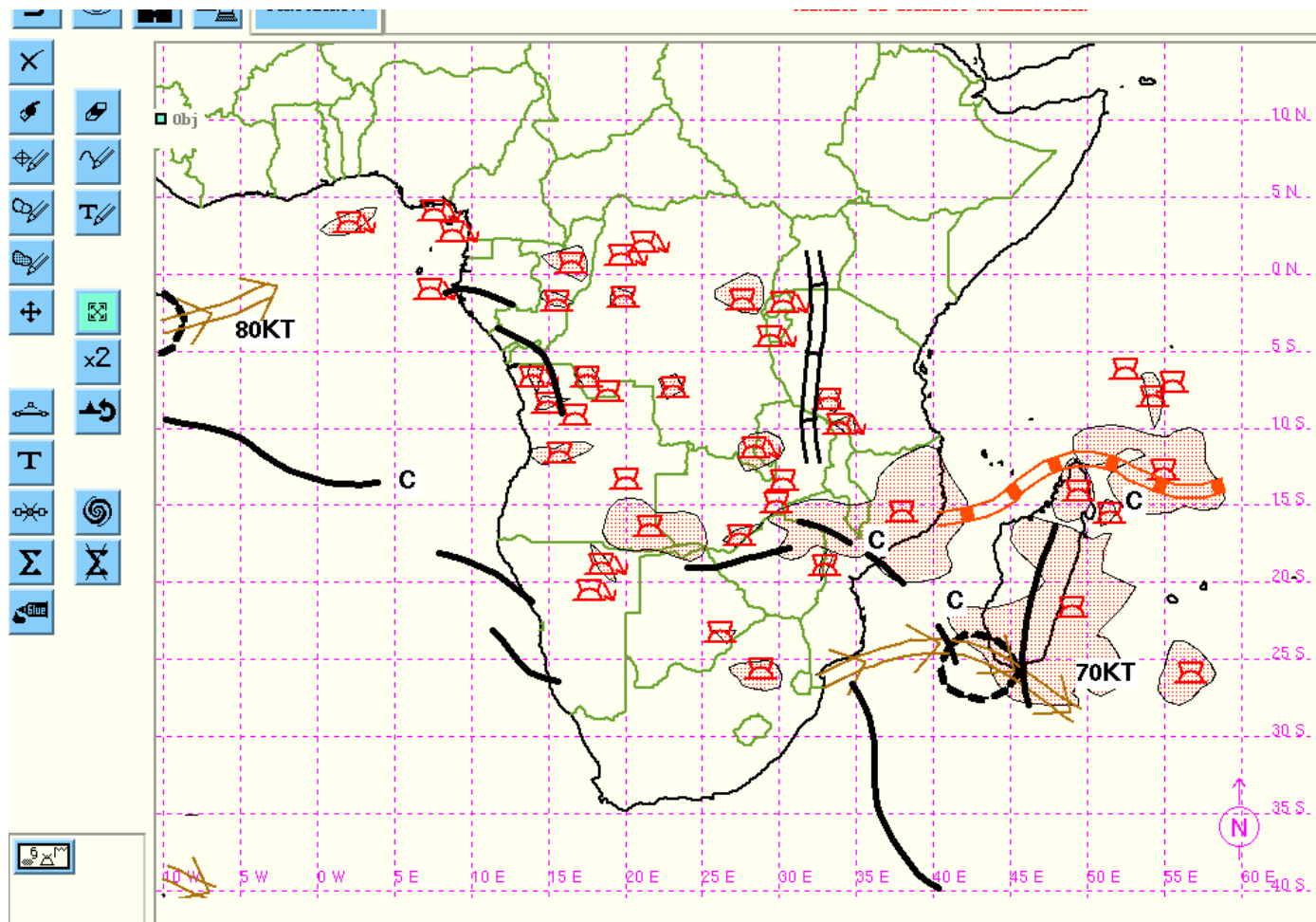
[www.acmad.org](http://www.acmad.org)

**Disclaimer:** This forecast and the map above are just for scientific purpose not for any political use because it might not depict the exact geographical demarcation between two or more politically independent countries.



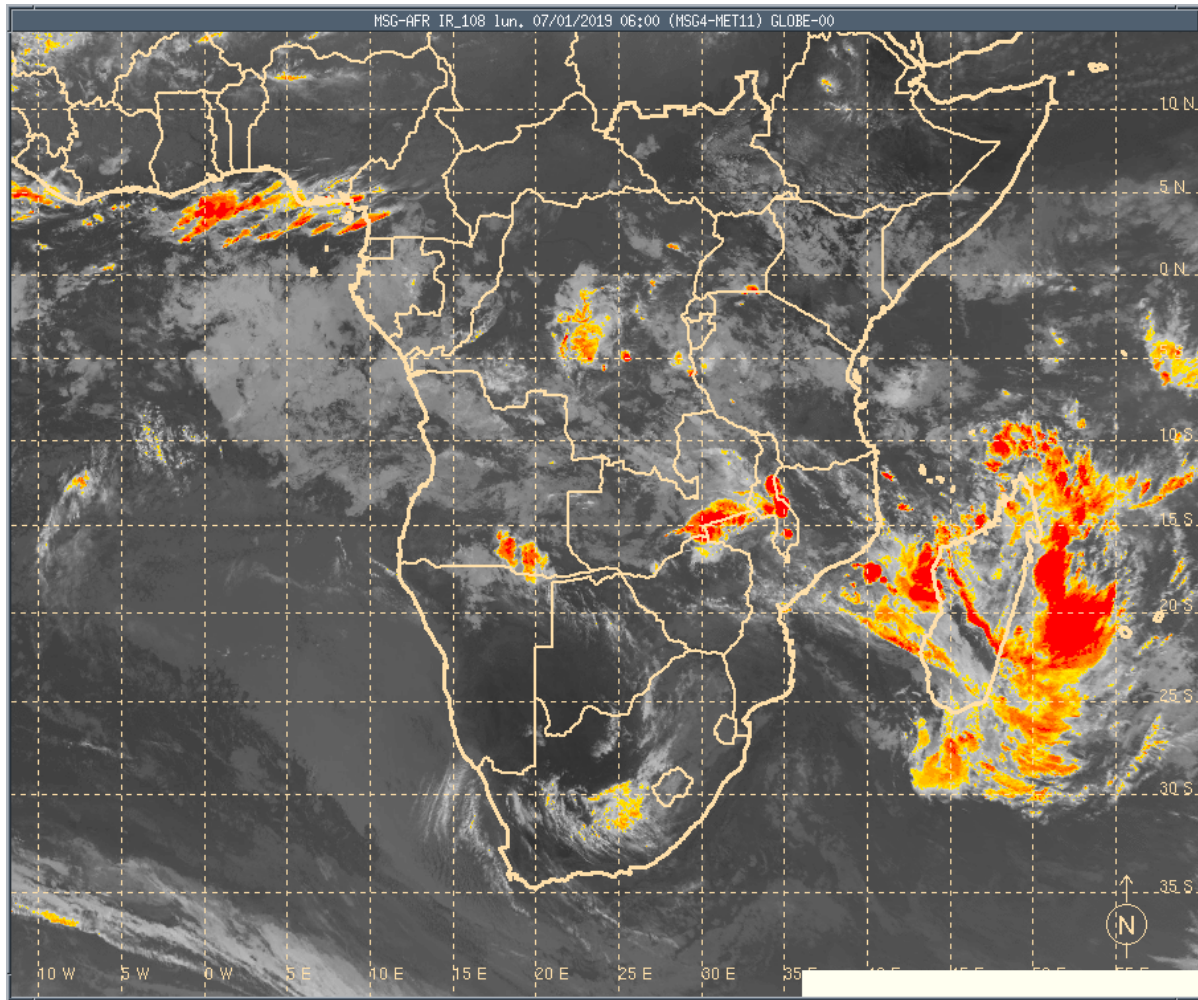
**Figure 1: Satellite image at 1800UTC for January 06<sup>th</sup>, 2019**

**Disclaimer:** *This forecast and the map above are just for scientific purpose not for any political use because it might not depict the exact geographical demarcation between two or more politically independent countries.*



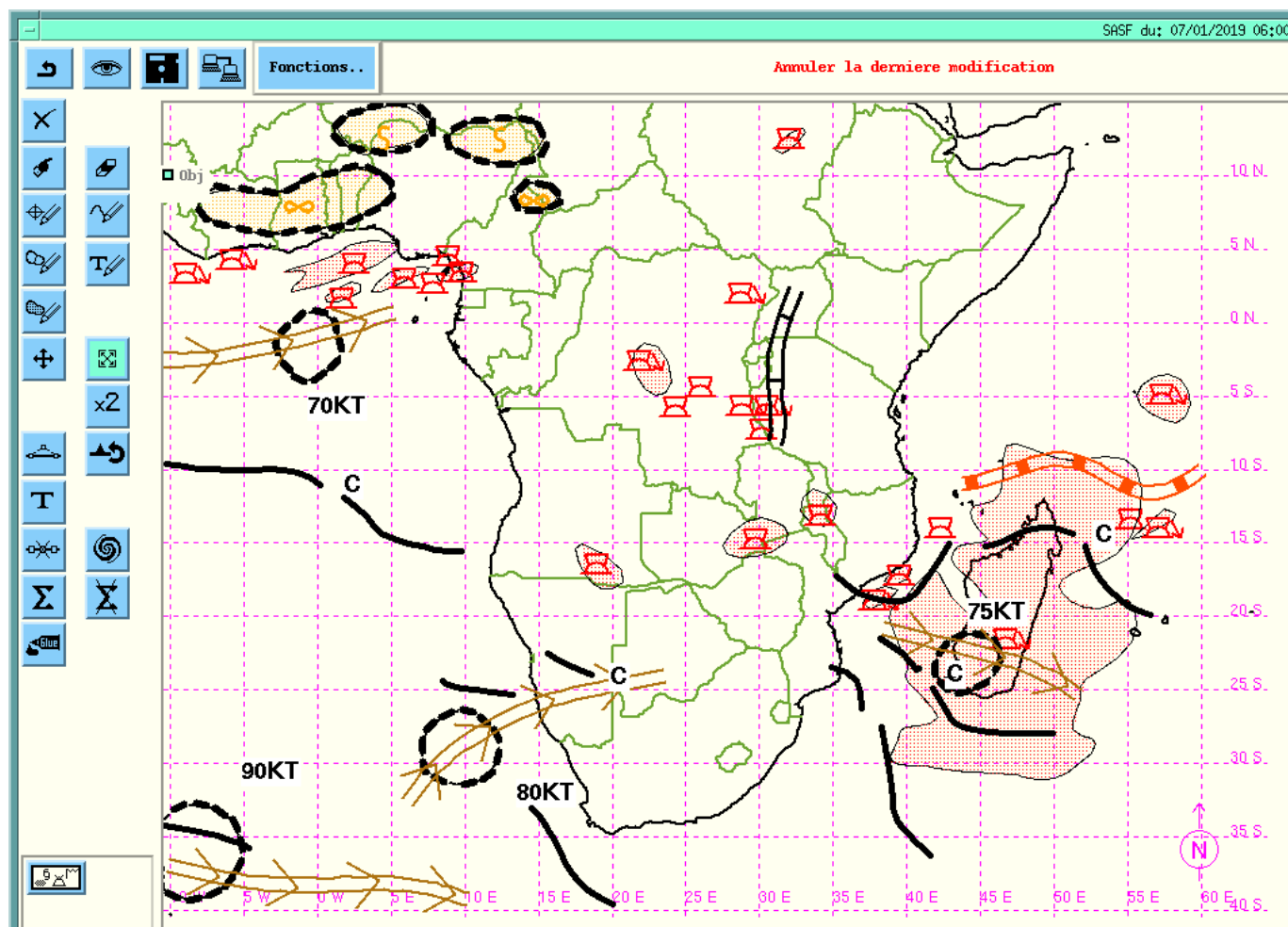
**Figure 2: Southern Africa Synthetic Analysis for January 06<sup>th</sup> 2019 at 1800UTC**

**Disclaimer:** This forecast and the map above are just for scientific purpose not for any political use because it might not depict the exact geographical demarcation between two or more politically independent countries.



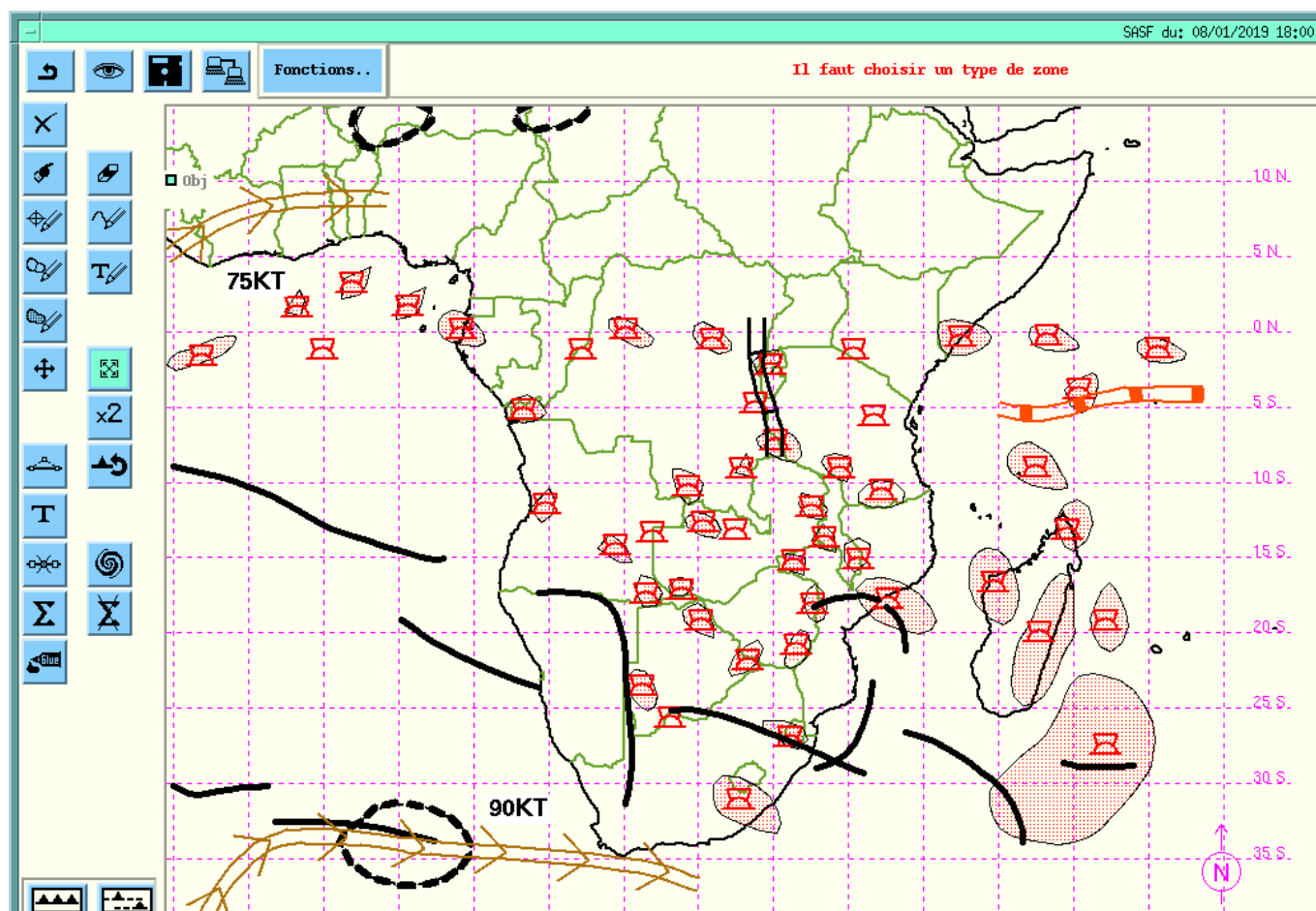
**Figure 3: Satellite image for January 07<sup>th</sup>, 2019 at 0600UTC**

**Disclaimer:** *This forecast and the map above are just for scientific purpose not for any political use because it might not depict the exact geographical demarcation between two or more politically independent countries.*



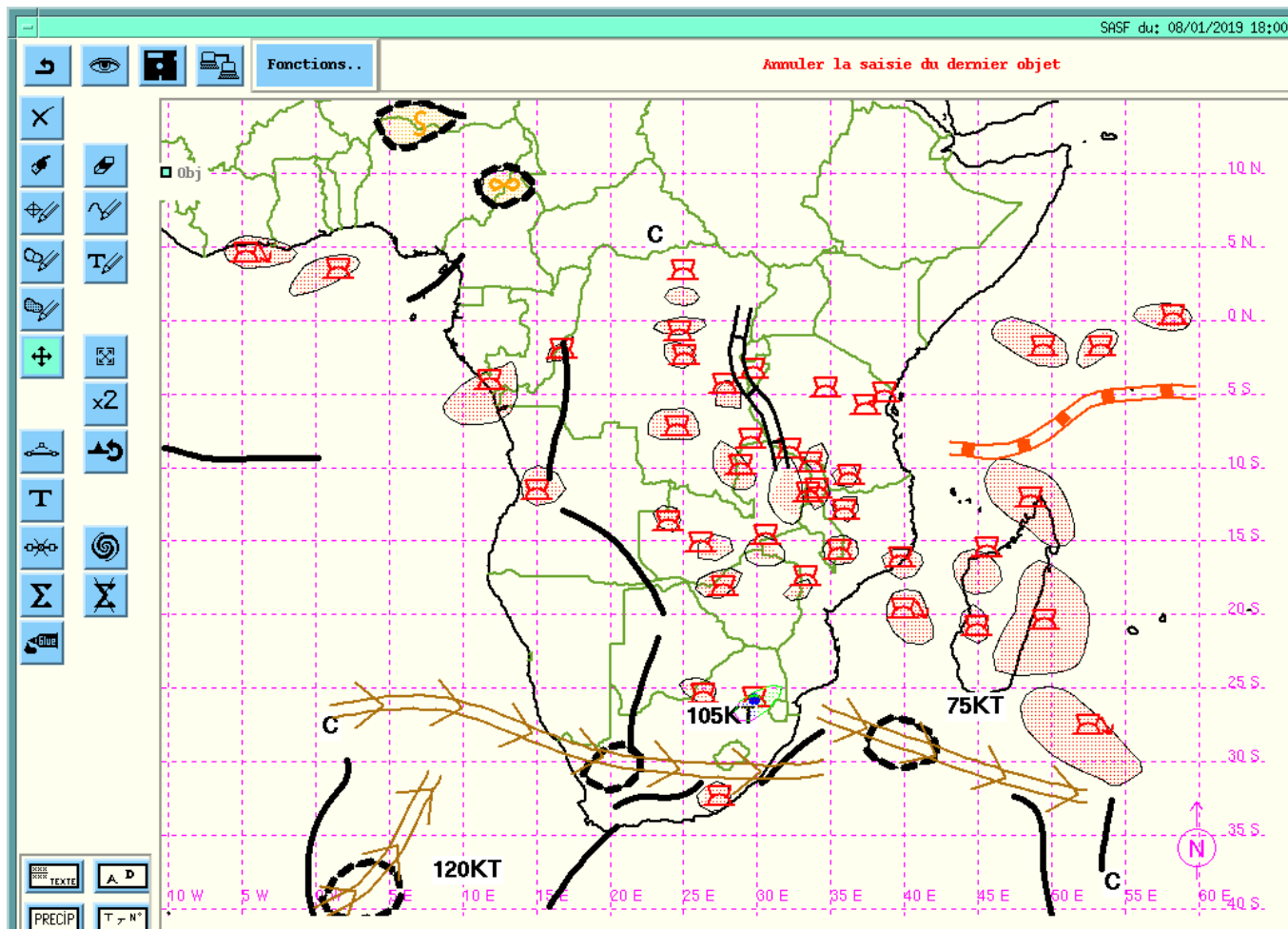
**Disclaimer:** This forecast and the map above are just for scientific purpose not for any political use because it might not depict the exact geographical demarcation between two or more politically independent countries.





**Figure 5: Southern Africa Synthetic Forecast for January 08<sup>th</sup>, 2019 at 1200UTC**

**Disclaimer:** This forecast and the map above are just for scientific purpose not for any political use because it might not depict the exact geographical demarcation between two or more politically independent countries.



**Figure 6: Southern Africa Synthetic Forecast for January 09<sup>th</sup>, 2019 at 1200UTC**

**Disclaimer:** This forecast and the map above are just for scientific purpose not for any political use because it might not depict the exact geographical demarcation between two or more politically independent countries.

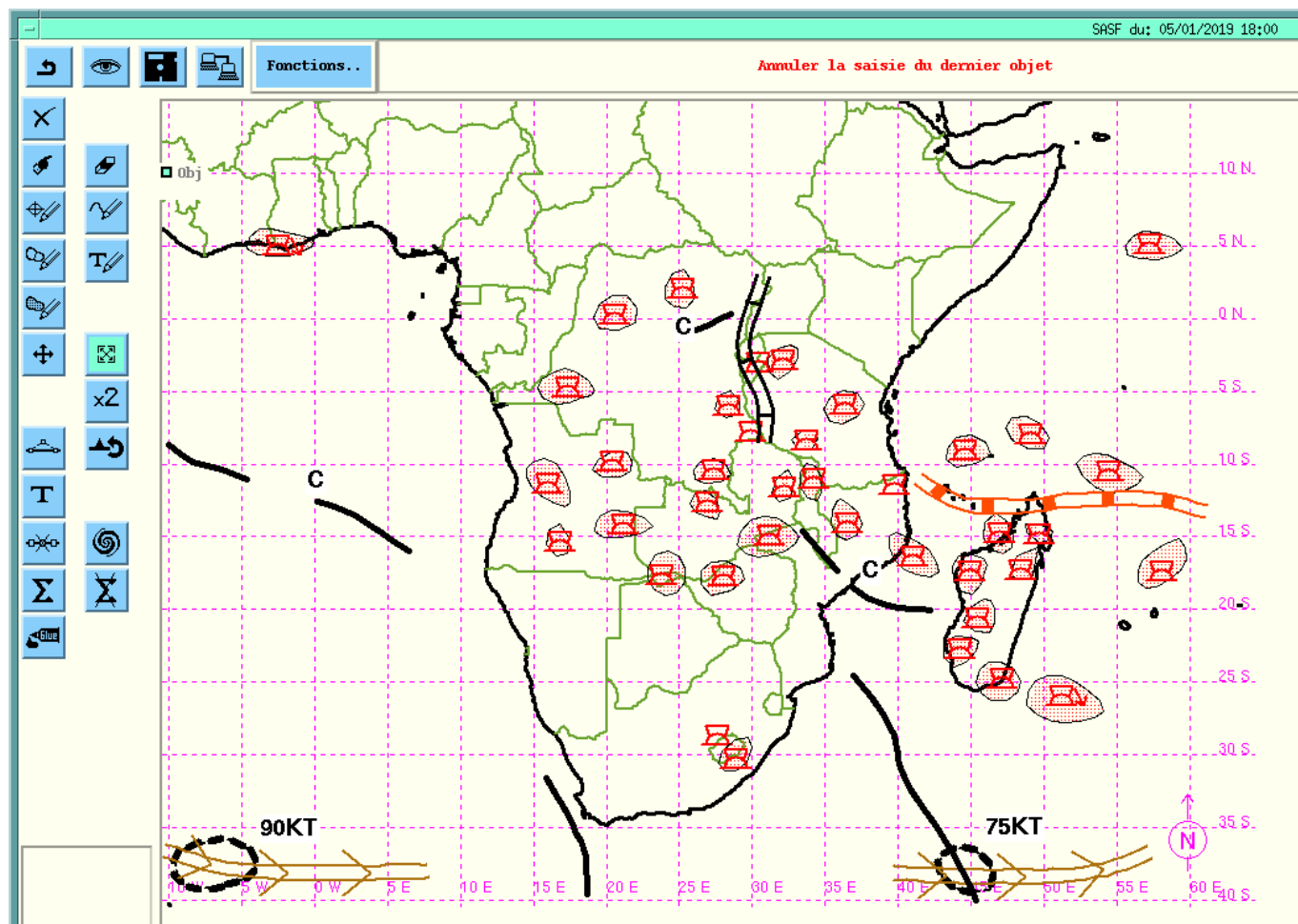
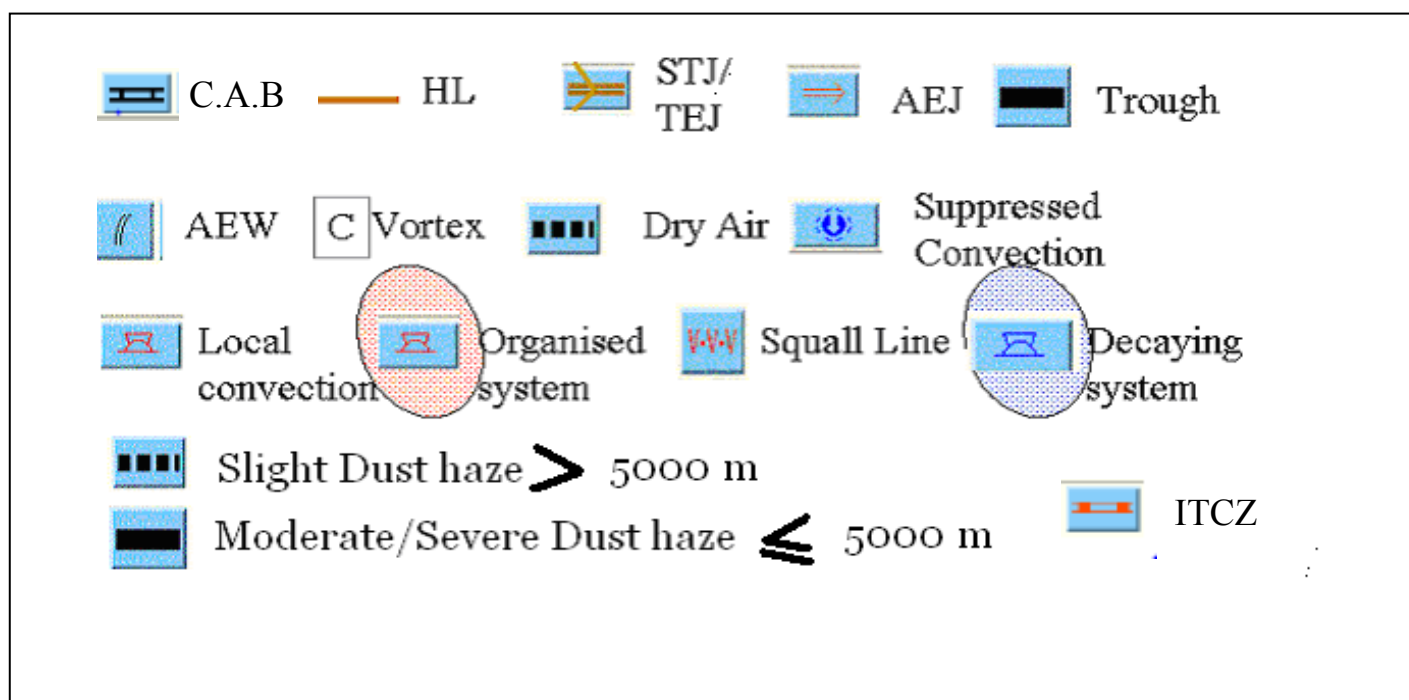


Figure 7: Southern Africa Synthetic Forecast for January 10<sup>th</sup>, 2019 at 1200UTC

## Legend



**Disclaimer:** This forecast and the map above are just for scientific purpose not for any political use because it might not depict the exact geographical demarcation between two or more politically independent countries.